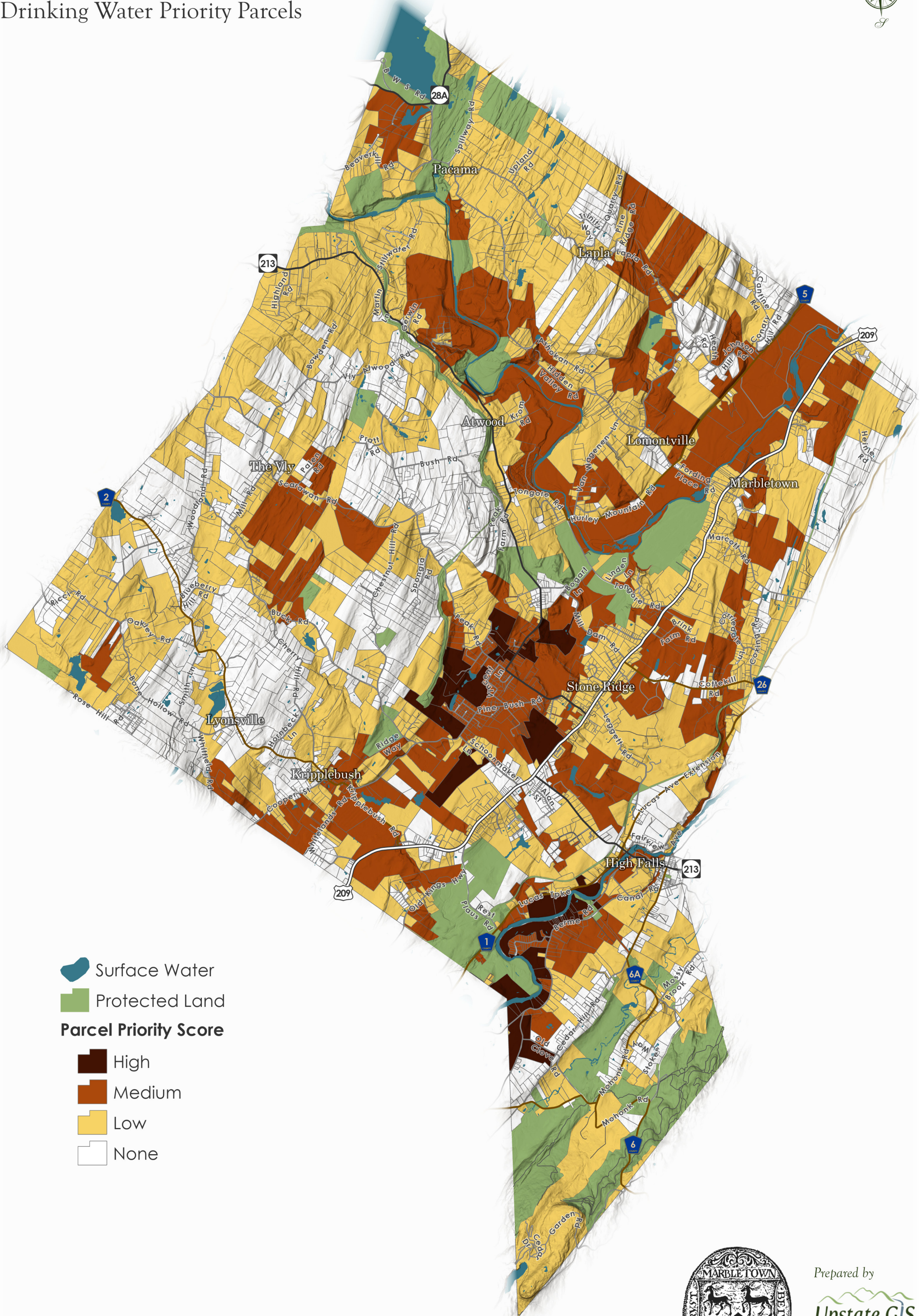
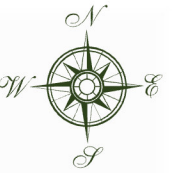


Marbletown Community Preservation Plan

Drinking Water Priority Parcels



- Surface Water
- Protected Land
- Parcel Priority Score**
 - High
 - Medium
 - Low
 - None

0 0.5 1 2 Miles

This map is for planning and informational purposes only and should not be used for navigation or legal determinations

This project has been funded in part by a grant from the New York State Environmental Protection Fund through the Hudson River Estuary Program of the State of New York Department of Environmental Conservation.



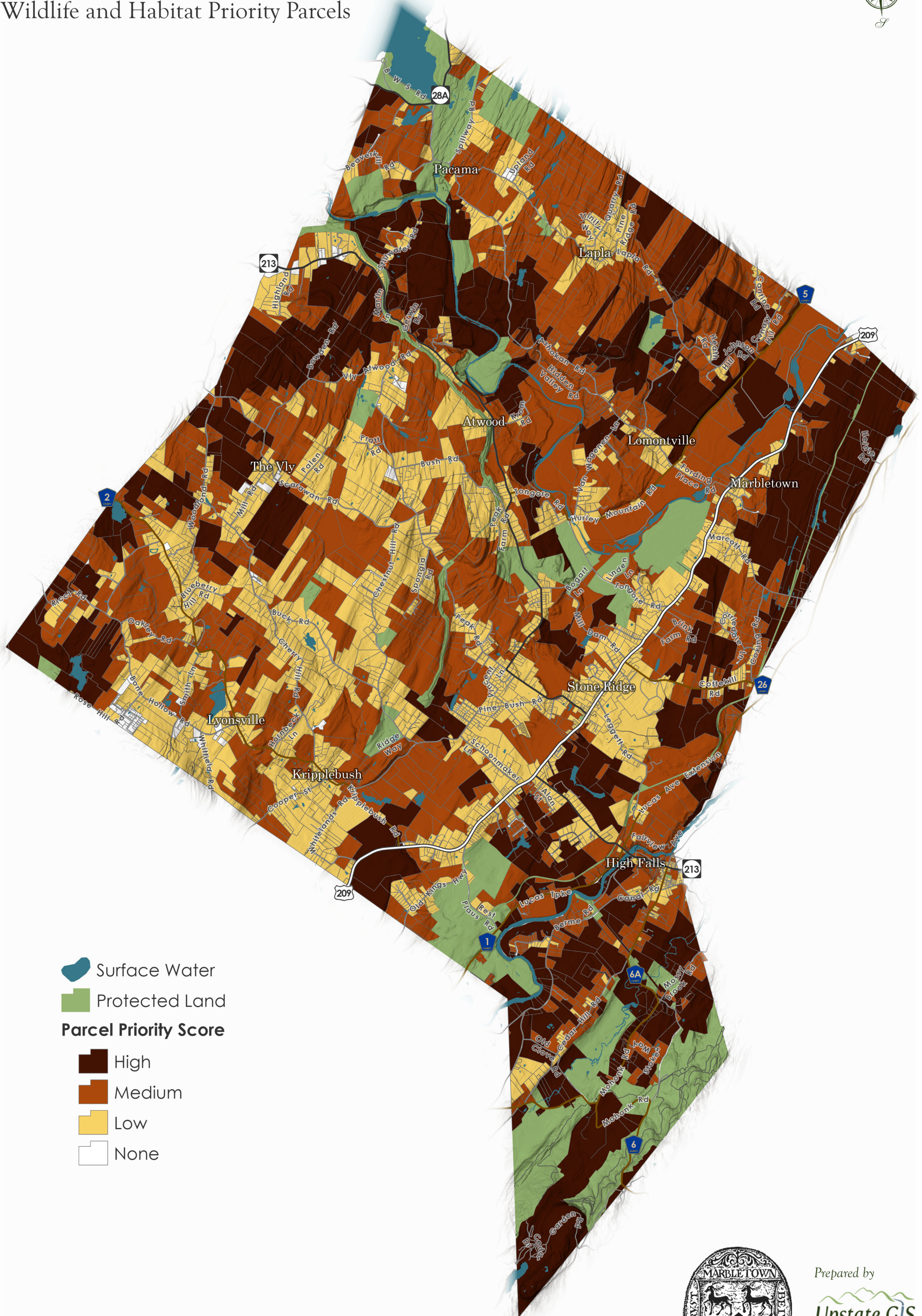
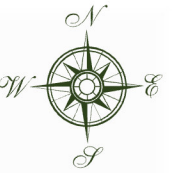
Prepared by







Upstate GIS

May 2022

Marbletown Community Preservation Plan

Wildlife and Habitat Priority Parcels



-  Surface Water
-  Protected Land
- Parcel Priority Score**
-  High
-  Medium
-  Low
-  None

0 0.5 1 2 Miles

This map is for planning and informational purposes only and should not be used for navigation or legal determinations

This project has been funded in part by a grant from the New York State Environmental Protection Fund through the Hudson River Estuary Program of the State of New York Department of Environmental Conservation.



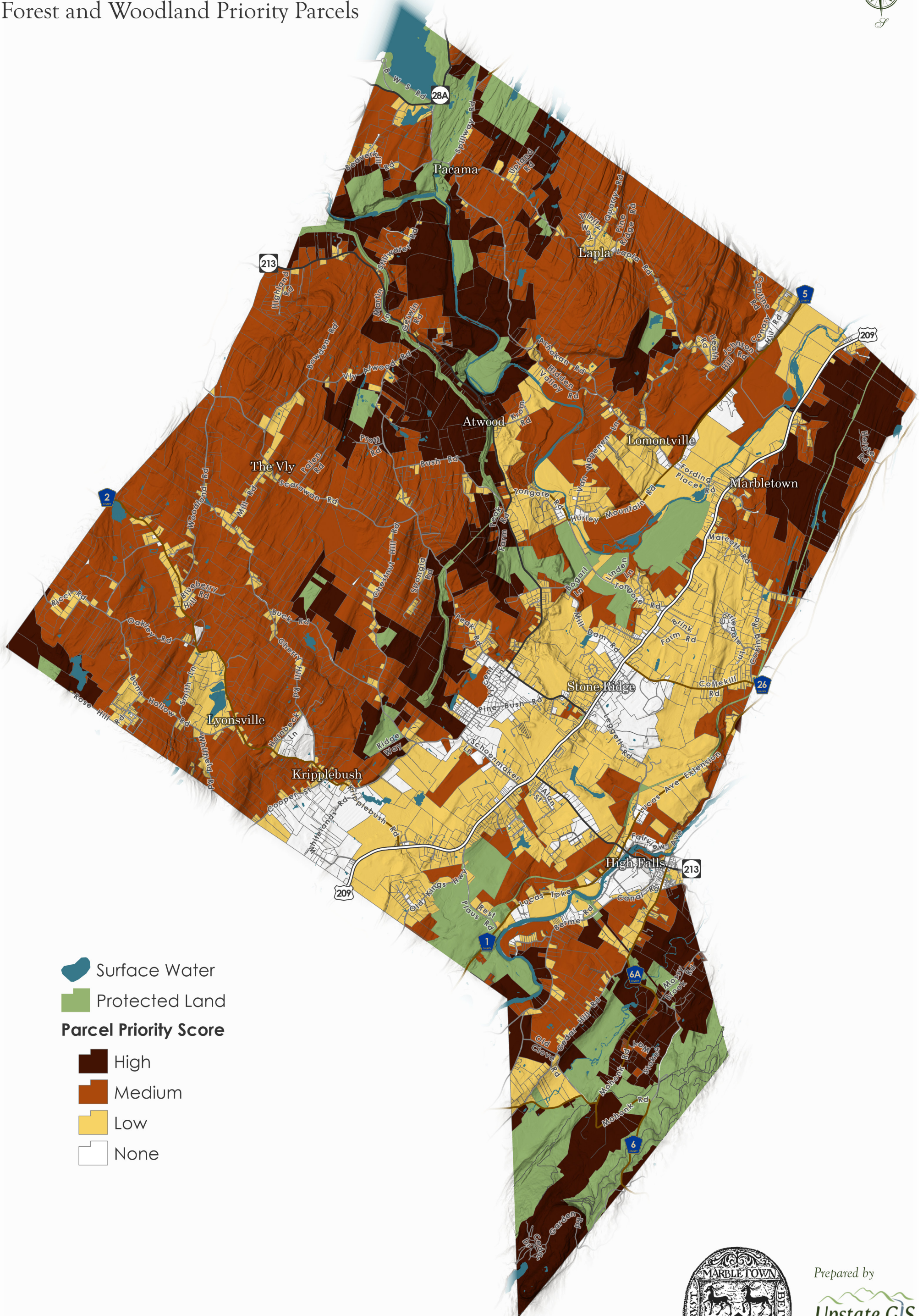
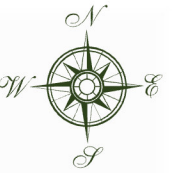
Prepared by







Upstate GIS

May 2022

Marbletown Community Preservation Plan

Forest and Woodland Priority Parcels



-  Surface Water
-  Protected Land
- Parcel Priority Score**
-  High
-  Medium
-  Low
-  None

0 0.5 1 2 Miles

This map is for planning and informational purposes only and should not be used for navigation or legal determinations

This project has been funded in part by a grant from the New York State Environmental Protection Fund through the Hudson River Estuary Program of the State of New York Department of Environmental Conservation.



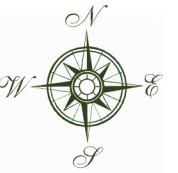
Prepared by

Upstate GIS

May 2022

Marbletown Community Preservation Plan

Streams and Wetlands Priority Parcels



- Surface Water
- Protected Land
- Parcel Priority Score**
- High
- Medium
- Low
- None

0 0.5 1 2 Miles

This map is for planning and informational purposes only and should not be used for navigation or legal determinations

This project has been funded in part by a grant from the New York State Environmental Protection Fund through the Hudson River Estuary Program of the State of New York Department of Environmental Conservation.



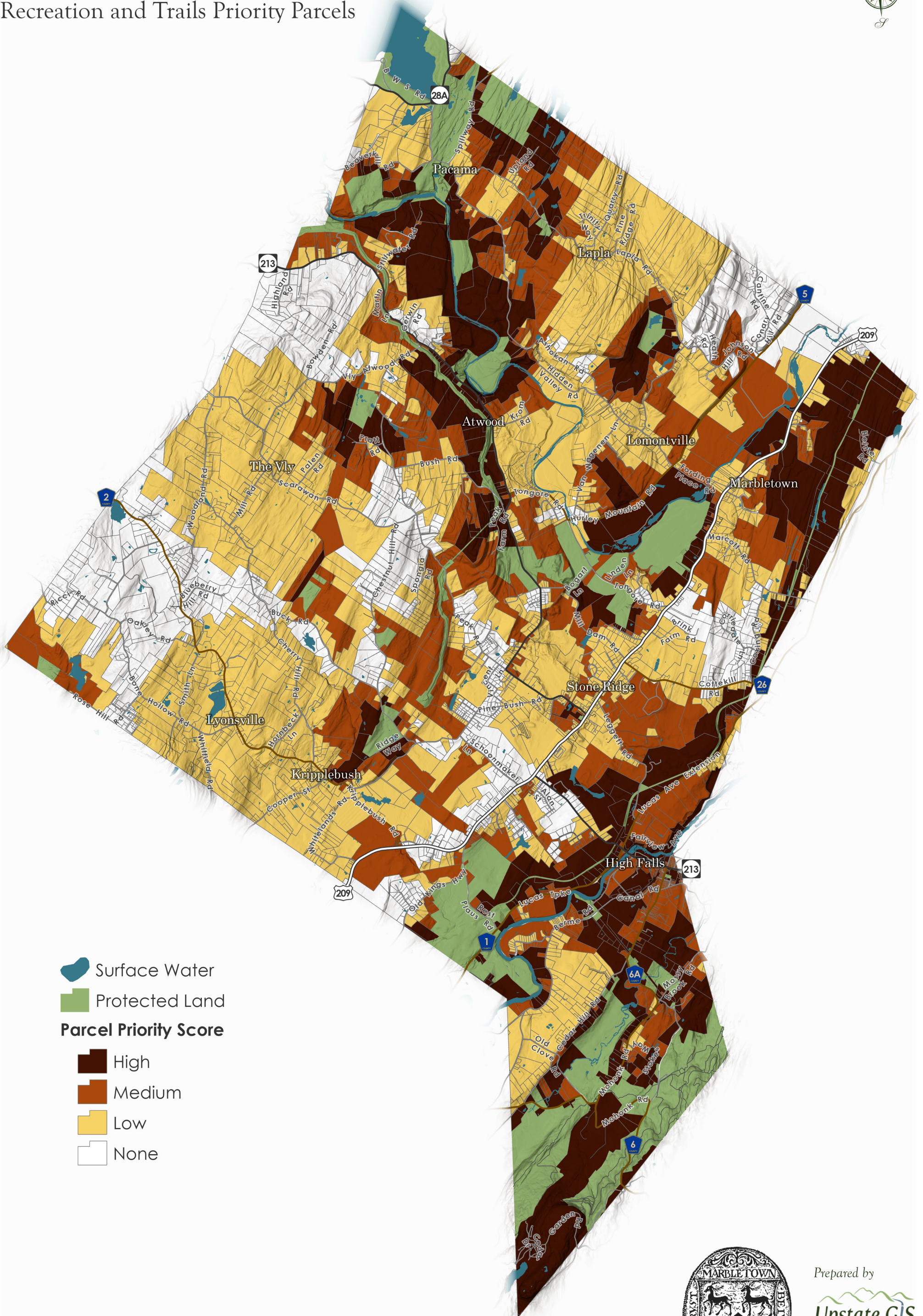
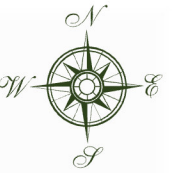
Prepared by







Upstate GIS

May 2022

Marbletown Community Preservation Plan

Recreation and Trails Priority Parcels



-  Surface Water
-  Protected Land
- Parcel Priority Score**
-  High
-  Medium
-  Low
-  None

0 0.5 1 2 Miles

This map is for planning and informational purposes only and should not be used for navigation or legal determinations

This project has been funded in part by a grant from the New York State Environmental Protection Fund through the Hudson River Estuary Program of the State of New York Department of Environmental Conservation.



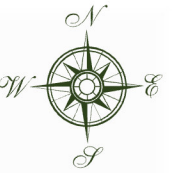
Prepared by

Upstate GIS

May 2022

Marbletown Community Preservation Plan

Scenic Areas Priority Parcels



- Surface Water
- Protected Land
- Parcel Priority Score**
 - High
 - Medium
 - Low
 - None

0 0.5 1 2 Miles
This map is for planning and informational purposes only and should not be used for navigation or legal determinations

This project has been funded in part by a grant from the New York State Environmental Protection Fund through the Hudson River Estuary Program of the State of New York Department of Environmental Conservation.

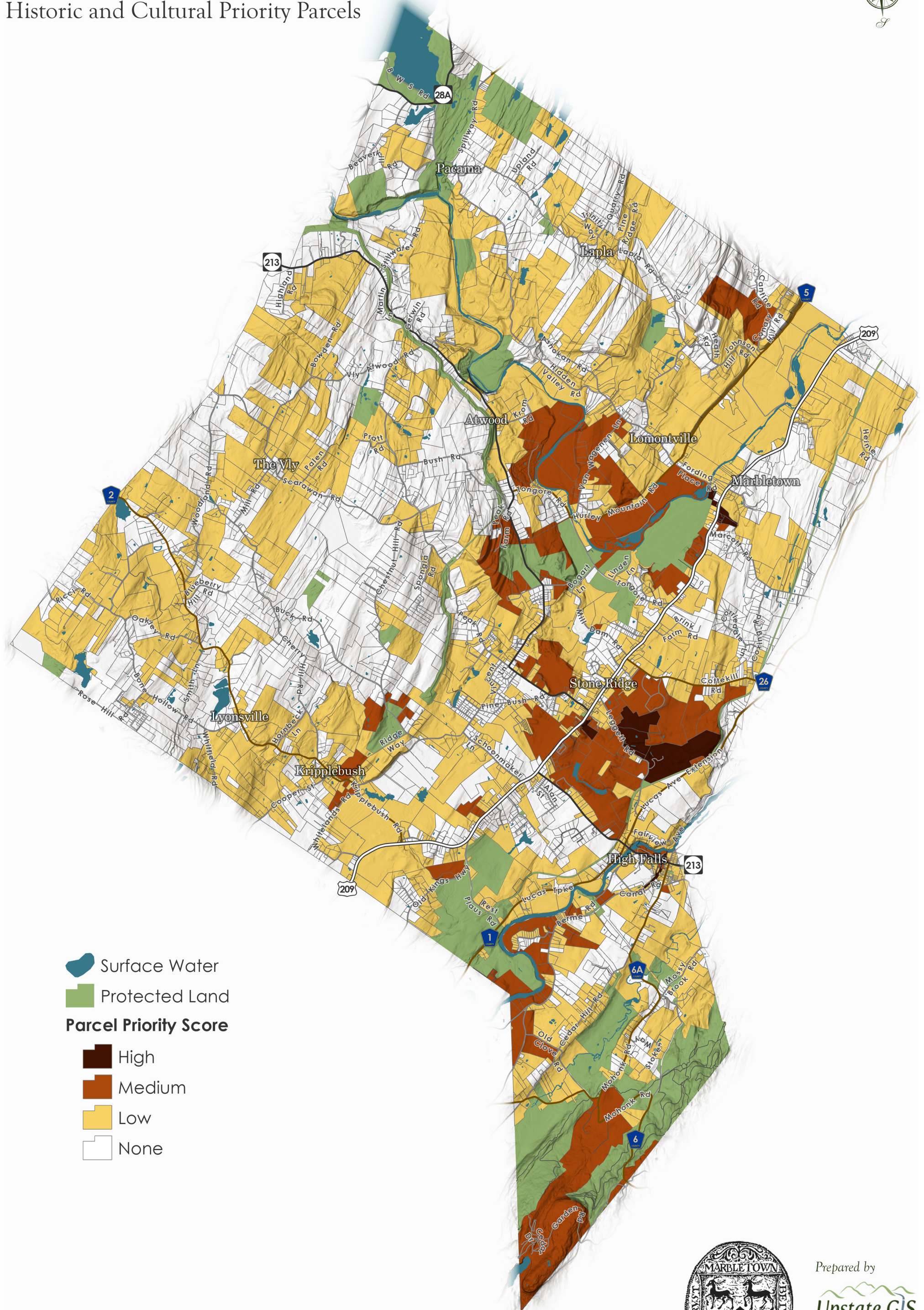
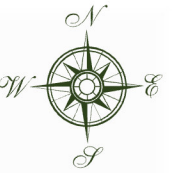








Prepared by
Upstate GIS

May 2022

Marbletown Community Preservation Plan

Historic and Cultural Priority Parcels



-  Surface Water
-  Protected Land
- Parcel Priority Score**
-  High
-  Medium
-  Low
-  None

0 0.5 1 2 Miles
 This map is for planning and informational purposes only and should not be used for navigation or legal determinations

This project has been funded in part by a grant from the New York State Environmental Protection Fund through the Hudson River Estuary Program of the State of New York Department of Environmental Conservation.

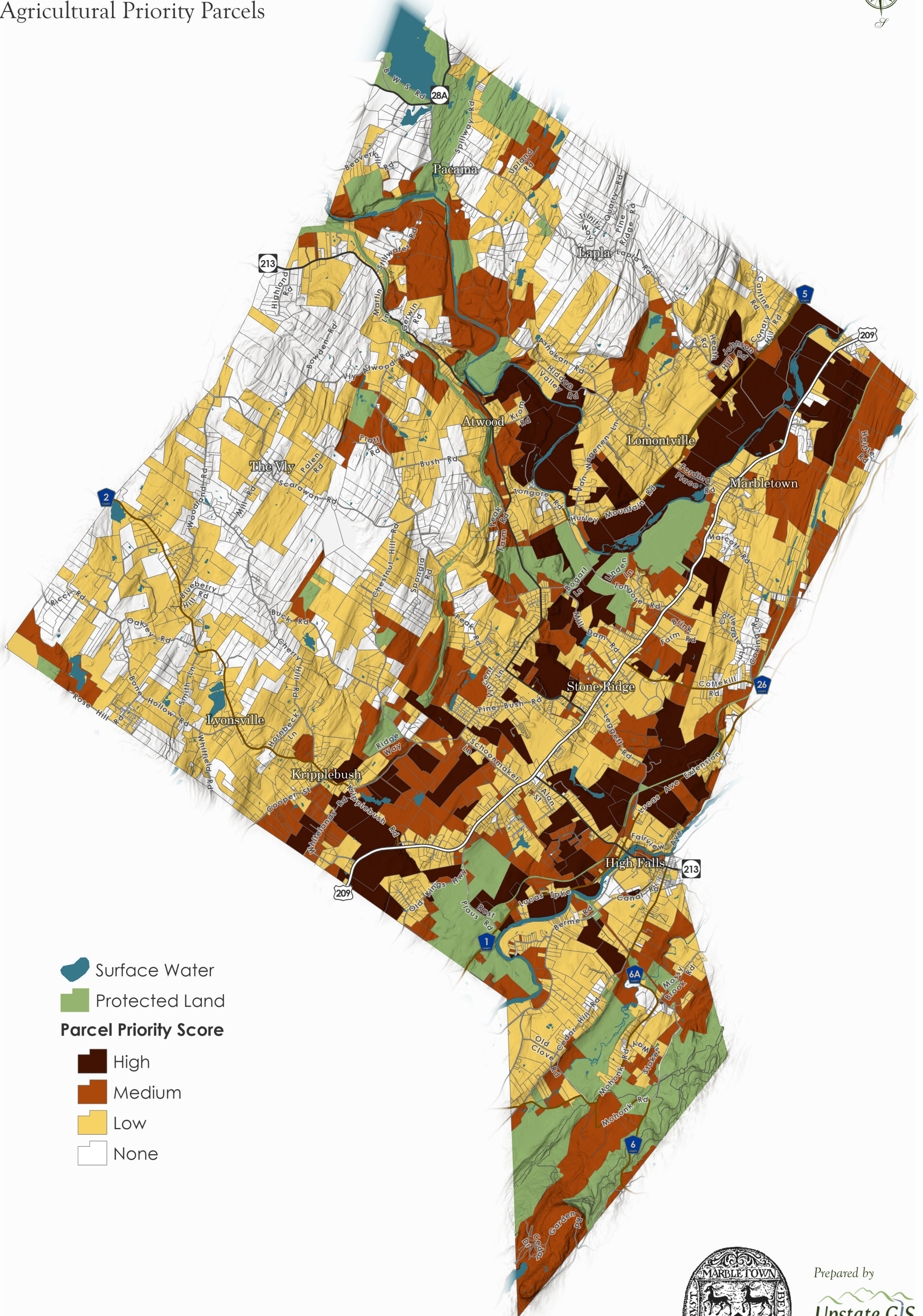
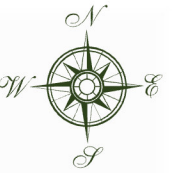


Prepared by


May 2022

Marbletown Community Preservation Plan

Agricultural Priority Parcels



- Surface Water
- Protected Land
- Parcel Priority Score**
- High
- Medium
- Low
- None

0 0.5 1 2 Miles

This map is for planning and informational purposes only and should not be used for navigation or legal determinations

This project has been funded in part by a grant from the New York State Environmental Protection Fund through the Hudson River Estuary Program of the State of New York Department of Environmental Conservation.



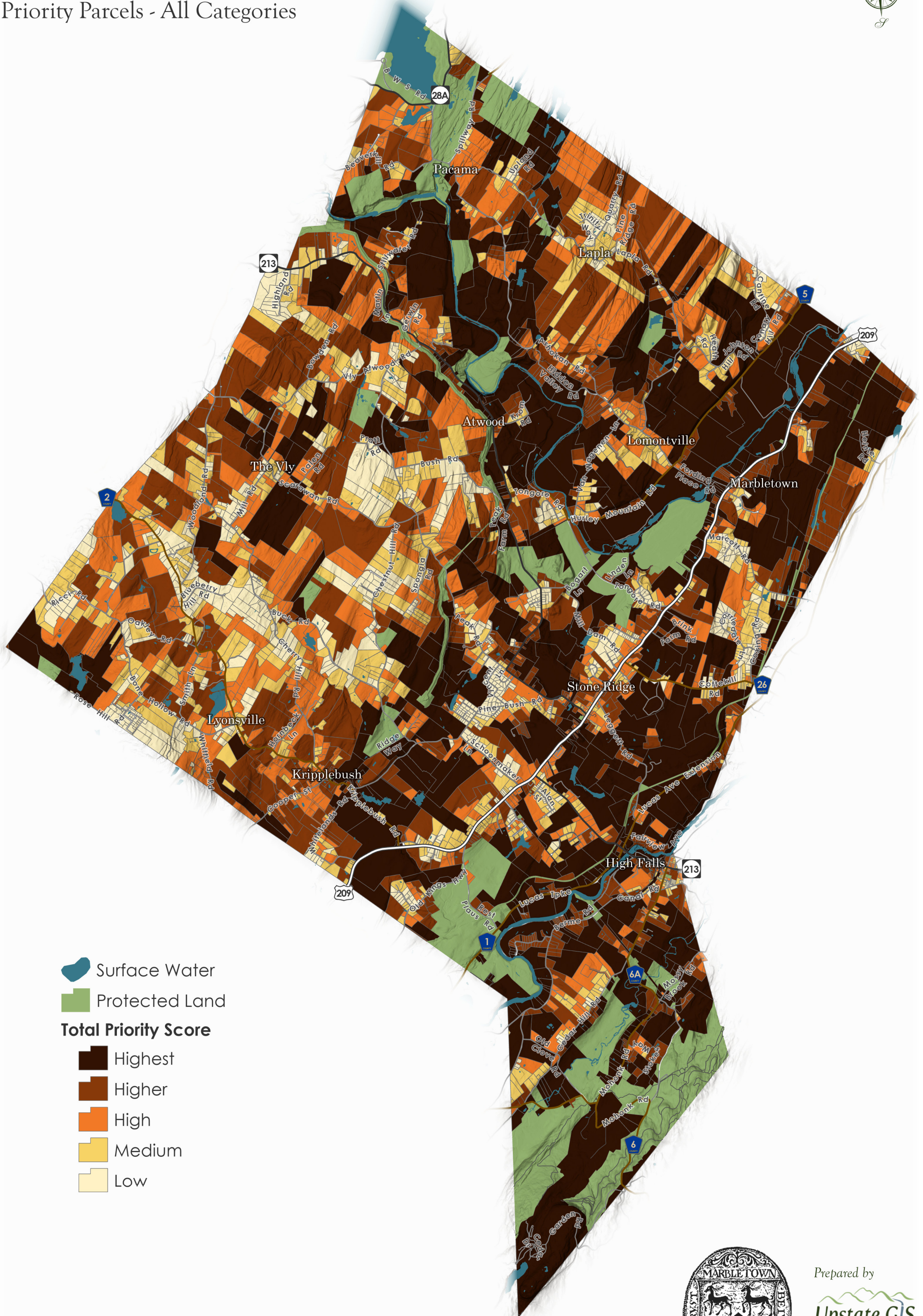
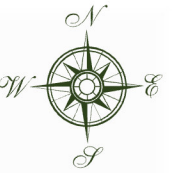
Prepared by

Upstate GIS

May 2022

Marbletown Community Preservation Plan

Priority Parcels - All Categories



- Surface Water
- Protected Land
- Total Priority Score**
 - Highest
 - Higher
 - High
 - Medium
 - Low

0 0.5 1 2 Miles

This map is for planning and informational purposes only and should not be used for navigation or legal determinations

This project has been funded in part by a grant from the New York State Environmental Protection Fund through the Hudson River Estuary Program of the State of New York Department of Environmental Conservation.



Prepared by

Upstate GIS

May 2022